

TLP624, TLP624-2, TLP624-4

DESCRIPTION

The TLP624, TLP624-2 and TLP624-4 series of optically coupled isolators consist of an infrared light emitting diode and an NPN silicon photo transistor in a space efficient Dual In Line Plastic Package.



FEATURES

- AC Isolation Voltage 5300V_{RMS}
- CTR Selections Available
- Wide Operating Temperature Range
-55°C to +100°C
- ESD HBM 8000V/MM2000V
- Lead Free and RoHS Compliant
- UL File E91231 Package Code "EE"
- VDE Approval Certificate No. 40028086

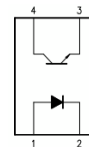
APPLICATIONS

- Computer Terminals
- Industrial System Controllers
- Measuring Instruments
- Signal Transmission between Systems of Different Potentials and Impedances

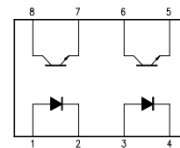
ORDER INFORMATION

- Add X after PN for VDE Approval
- Add G after PN for 10mm lead spacing
- Add SM after PN for Surface Mount
- Add SMT&R after PN for Surface Mount Tape & Reel
(Available for TLP624SM and TLP624-2SM)
- Optional Order Part No. TLP624-1 for TLP624

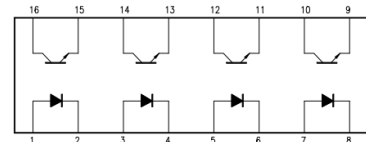
TLP621



TLP621-2



TLP621-4



ABSOLUTE MAXIMUM RATINGS (T_A = 25°C)

Stresses exceeding the absolute maximum ratings can cause permanent damage to the device. Exposure to absolute maximum ratings for long periods of time can adversely affect reliability.

Input

Forward Current	50mA
Reverse Voltage	6V
Power dissipation	70mW

Output

Collector to Emitter Voltage BV _{CEO}	55V
Emitter to Collector Voltage BV _{ECO}	6V
Collector Current	50mA
Power Dissipation	150mW

Total Package

Isolation Voltage	5300V _{RMS}
Total Power Dissipation	200mW
Operating Temperature	-55 to 100 °C
Storage Temperature	-55 to 125 °C
Lead Soldering Temperature (10s)	260°C

ISOCOM COMPONENTS 2004 LTD

Unit 25B, Park View Road West, Park View Industrial Estate
Hartlepool, Cleveland, TS25 1PE, United Kingdom
Tel : +44 (0)1429 863 609 Fax : +44 (0)1429 863 581
e-mail : sales@isocom.co.uk
<http://www.isocom.com>

ISOCOM COMPONENTS ASIA LTD

Hong Kong Office
Block A, 8/F, Wah Hing Industrial Mansion
36 Tai Yau Street, San Po Kong, Kowloon, Hong Kong
Tel : +852 2995 9217 Fax : +852 8161 6292
e-mail : sales@isocom.com.hk

TLP624, TLP624-2, TLP624-4

ELECTRICAL CHARACTERISTICS (Ambient Temperature = 25°C unless otherwise specified)

INPUT

Parameter	Symbol	Test Condition	Min	Typ.	Max	Unit
Forward Voltage	V_F	$I_F = 10\text{mA}$	1.0	1.15	1.3	V
Reverse Voltage	V_R	$I_R = 10\mu\text{A}$	5.0			V
Reverse Current	I_R	$V_R = 5\text{V}$			10	μA

OUTPUT

Parameter	Symbol	Test Condition	Min	Typ.	Max	Unit
Collector—Emitter breakdown Voltage	BV_{CEO}	$I_C = 0.5\text{mA}, I_F = 0\text{mA}$	55			V
Emitter—Collector breakdown Voltage	BV_{ECO}	$I_E = 100\mu\text{A}, I_F = 0\text{mA}$	6			V
Collector-Emitter Dark Current	I_{CEO}	$V_{CE} = 24\text{V}, I_F = 0\text{mA}$			100	nA



TLP624, TLP624-2, TLP624-4

ELECTRICAL CHARACTERISTICS (Ambient Temperature = 25°C unless otherwise specified)

COUPLED

Parameter	Symbol	Test Condition	Min	Typ.	Max	Unit
Current Transfer Ratio TLP624, TLP624-2, TLP624-4A	CTR	1mA = I _F , 0.5V = V _{CE} 0.5mA = I _F , 1.5V = V _{CE}	100 50		1200	%
TLP624A, TLP624-2A, TLP624-4A		1mA = I _F , 0.5V = V _{CE}	200		1200	
Collector—Emitter Saturation Voltage	V _{CE(sat)}	I _F = 8mA, I _C = 2.4mA GB (I _F = 1mA, I _C = 0.2mA)		0.2	0.4	V
Output Rise Time	t _r	V _{CE} = 10V, I _C = 2mA, R _L = 100Ω		8		μs
Output Fall Time	t _f			8		
Turn-on Time	t _{on}			10		
Turn-off Time	t _{off}			8		

ISOLATION

Parameter	Symbol	Test Condition	Min	Typ.	Max	Unit
Input to Output Isolation Voltage	V _{ISO}	AC 1 minute, RH = 40 to 60% Note 1	5300 7500			V _{RMS} V _{PK}
Input to Output Isolation Resistance	R _{ISO}	V _{IO} = 500V Note 1	5x10 ¹⁰			Ω

Note 1 : Measure with input leads shorted together and output leads shorted together.



TLP624, TLP624-2, TLP624-4

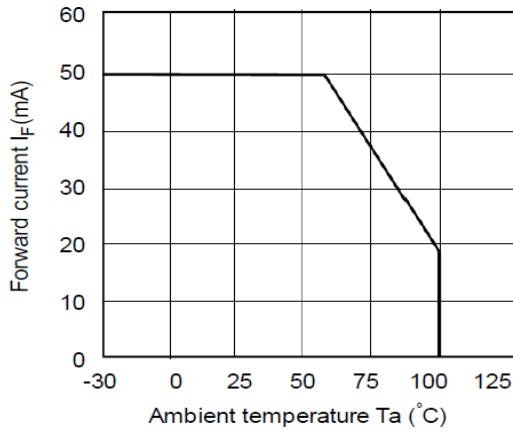


Fig 1 Forward Current vs. Ambient Temperature

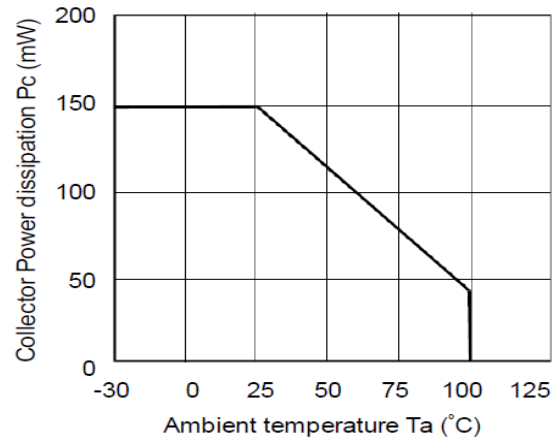


Fig 2 Collector-emitter Saturation Voltage vs. Ambient Temperature

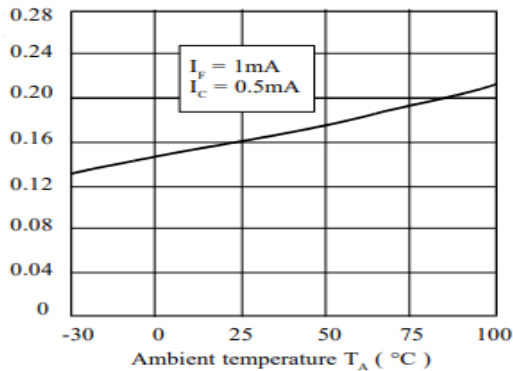


Fig 3 Collector-emitter Saturation Voltage vs Forward Current

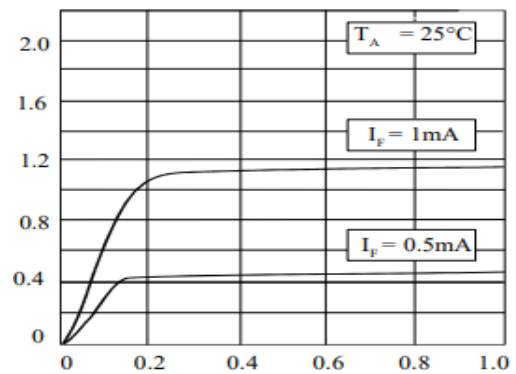


Fig 4 Collector Current vs Collector-emitter Voltage

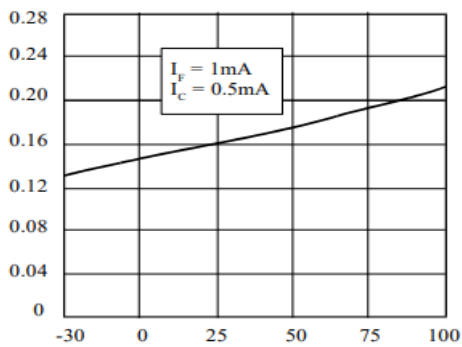


Fig 5 Collector-emitter Saturation Voltage vs. Ambient Temperature

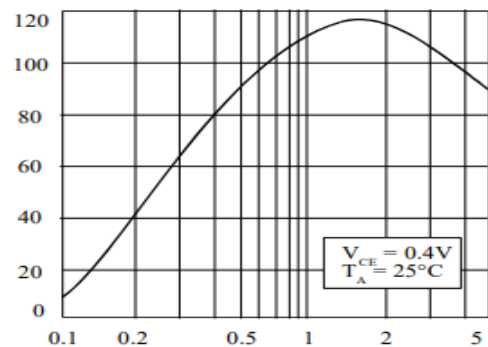


Fig 6 Forward Current vs Forward Voltage

TLP624, TLP624-2, TLP624-4

ORDER INFORMATION

TLP624, TLP624-1 (UL Approval)			
After PN	PN	Description	Packing quantity
None	TLP624, TLP624-1	Standard DIP4	100 pcs per tube
G	TLP624G, TLP624-1G	10mm Lead Spacing	100 pcs per tube
SM	TLP624SM, TLP624-1SM	Surface Mount	100 pcs per tube
SMT&R	TLP624SMT&R, TLP624-1SMT&R	Surface Mount Tape & Reel	1000 pcs per reel

Note : Optional Order Part No. TLP624-1 for TLP624.

Devices with suffix “X” (UL and VDE approvals) may be supplied when ordering the above Part Numbers (UL approval only).

TLP624, TLP624-2, TLP624-4

ORDER INFORMATION

TLP621-2 (UL Approval)			
After PN	PN	Description	Packing quantity
None	TLP624-2	Standard DIP8	50 pcs per tube
G	TLP624-2G	10mm Lead Spacing	50 pcs per tube
SM	TLP624-2SM	Surface Mount	50 pcs per tube
SMT&R	TLP624-2SMT&R	Surface Mount Tape & Reel	1000 pcs per reel

TLP621-4 (UL Approval)			
After PN	PN	Description	Packing quantity
None	TLP624-4	Standard DIP16	25 pcs per tube
G	TLP624-4G	10mm Lead Spacing	25 pcs per tube

TLP624, TLP624-2, TLP624-4

ORDER INFORMATION

TLP624X, TLP624-1X (UL and VDE Approvals)			
After PN	PN	Description	Packing quantity
None	TLP624-1X, TLP624X	Standard DIP4	100 pcs per tube
G	TLP624-1XG	10mm Lead Spacing	100 pcs per tube
SM	TLP624-1XSM	Surface Mount	100 pcs per tube
SMT&R	TLP624-1XT&R	Surface Mount Tape & Reel	1000 pcs per reel

Note : Optional Order Part No. TLP624-1X for TLP624X.
 Devices with suffix "X" (UL and VDE approvals) may be supplied when ordering the above Part Numbers (UL approval only).

TLP624, TLP624-2, TLP624-4
ORDER INFORMATION

TLP624-2X (UL and VDE Approvals)			
After PN	PN	Description	Packing quantity
None	TLP624-2X	Standard DIP8	50 pcs per tube
G	TLP624-2XG	10mm Lead Spacing	50 pcs per tube
SM	TLP624-2XSM	Surface Mount	50 pcs per tube
SMT&R	TLP624-2XSMT&R	Surface Mount Tape & Reel	1000 pcs per reel

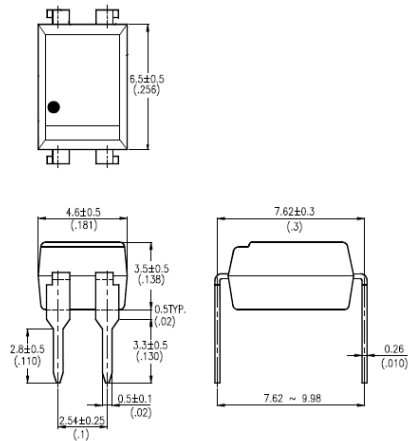
TLP624-4X (UL and VDE Approvals)			
After PN	PN	Description	Packing quantity
None	TLP624-4X	Standard DIP16	25 pcs per tube
G	TLP624-4XG	10mm Lead Spacing	25 pcs per tube
SM	TLP624-4XSM	Surface Mount	25 pcs per tube

TLP624, TLP624-2, TLP624-4

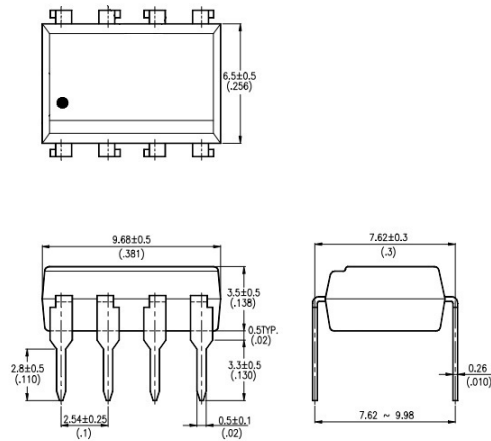
PACKAGE DIMENSIONS in mm (inch)

DIP

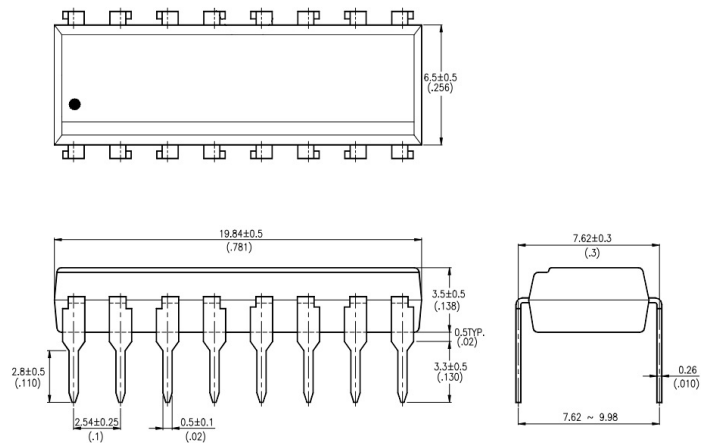
TLP624



TLP624-4



TLP624-4

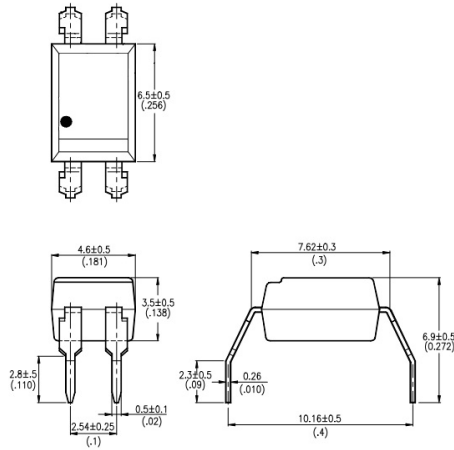


TLP624, TLP624-2, TLP624-4

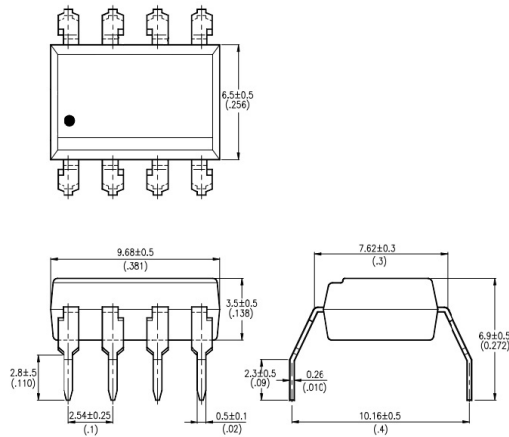
PACKAGE DIMENSIONS in mm (inch)

G Form

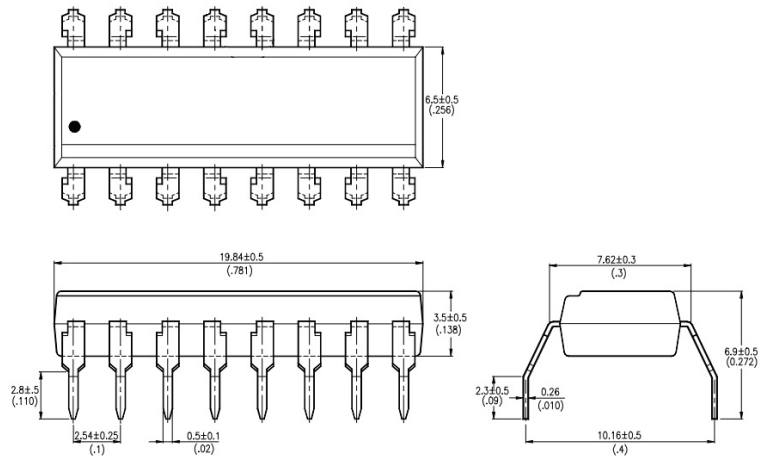
TLP624G



TLP624-2G



TLP624-4G

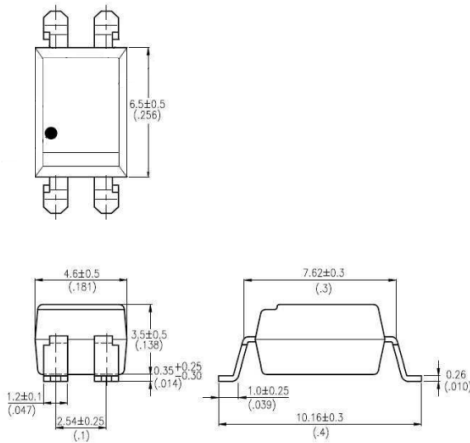


TLP624, TLP624-2, TLP624-4

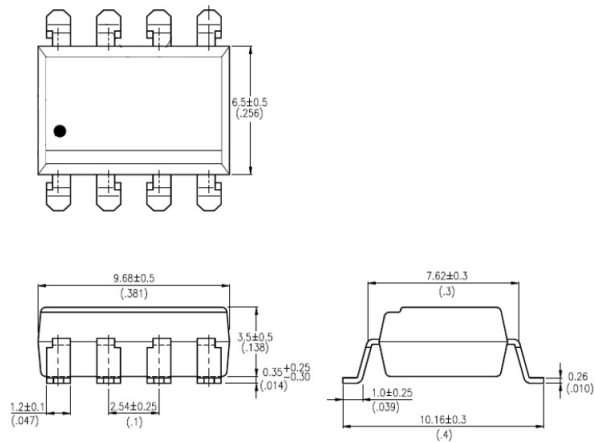
PACKAGE DIMENSIONS in mm (inch)

SMD

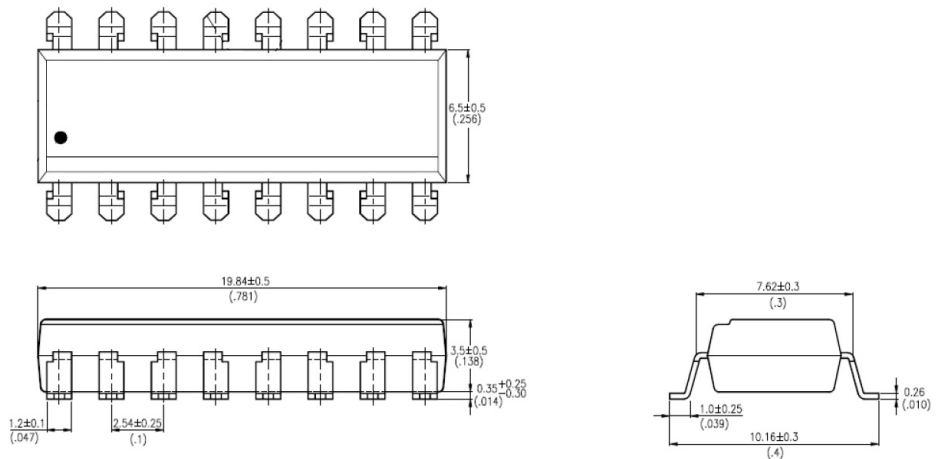
TLP624SM



TLP624-2SM



TLP624-4SM

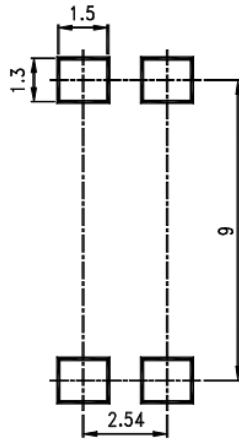




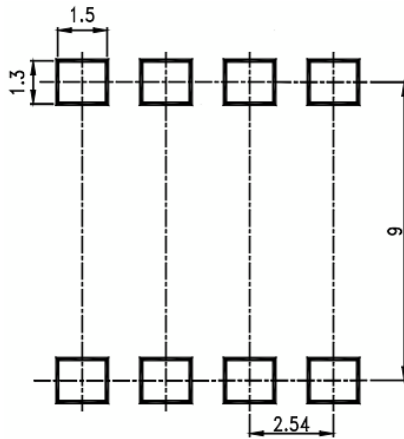
TLP624, TLP624-2, TLP624-4

RECOMMENDED PAD LAYOUT FOR SMD (mm)

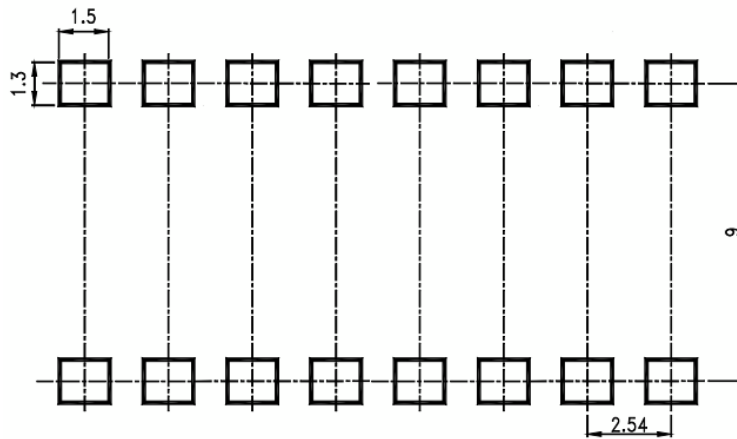
TLP624SM



TLP624-2SM



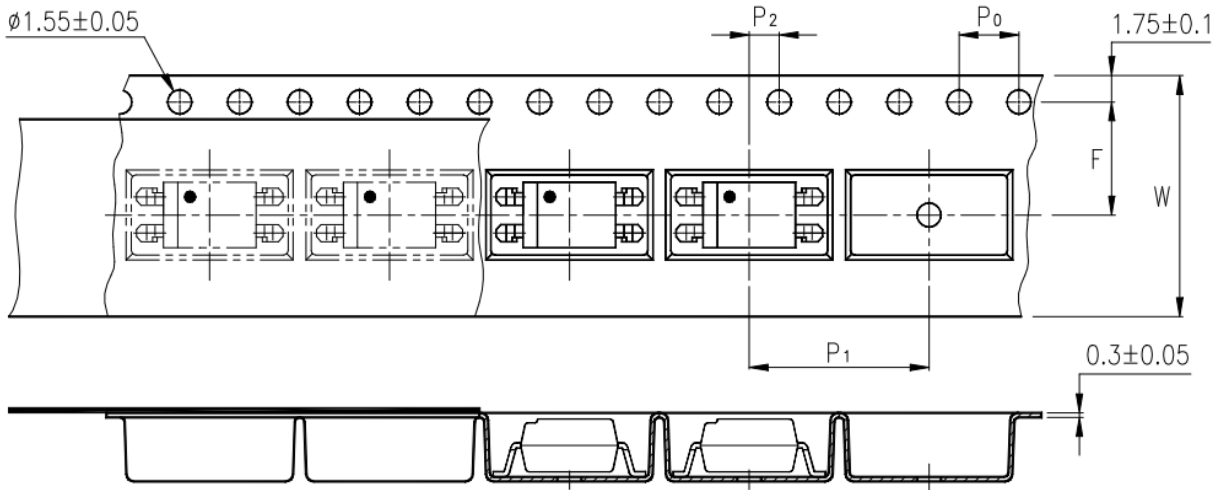
TLP624-4SM



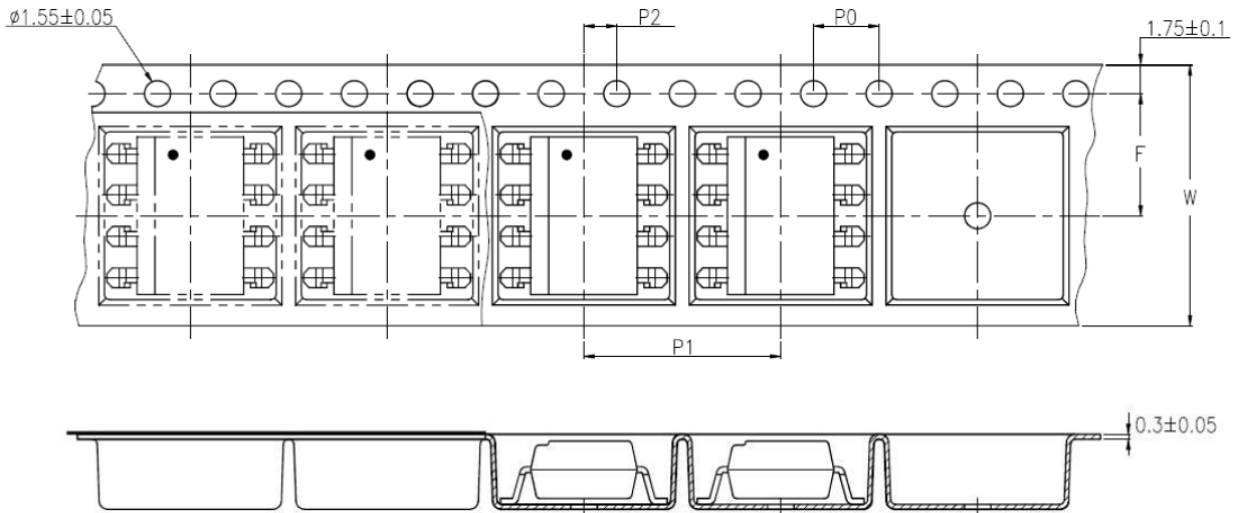
TLP624, TLP624-2, TLP624-4

TAPE AND REEL PACKAGING

TLP624SMT&R



TLP624-2SMT&R

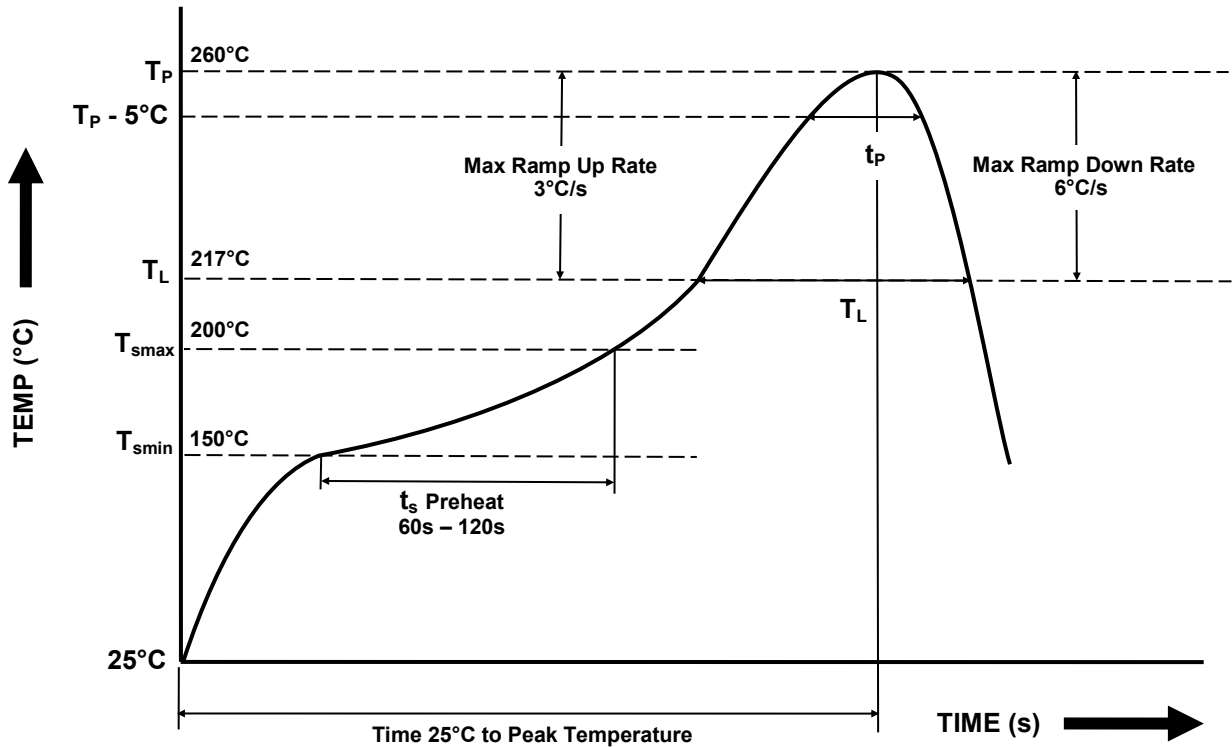


Description	Symbol	Dimensions in mm (inches)
Tape wide	W	16 ± 0.3 (.63)
Pitch of sprocket holes	P_0	4 ± 0.1 (.15)
Distance of compartment	F	7.5 ± 0.1 (.295)
Distance of compartment to compartment	P_1	2 ± 0.1 (.079)
Distance of compartment to compartment	P_1	12 ± 0.1 (.472)



TLP624, TLP624-2, TLP624-4

IR REFLOW SOLDERING TEMPERATURE PROFILE FOR SMD
(One Time Reflow Soldering is Recommended)



Profile Details	Conditions
Preheat - Min Temperature (T_{SMIN}) - Max Temperature (T_{SMAX}) - Time T_{SMIN} to T_{SMAX} (t_s)	150°C 200°C 60s - 120s
Soldering Zone - Peak Temperature (T_P) - Time at Peak Temperature - Liquidous Temperature (T_L) - Time within 5°C of Actual Peak Temperature ($T_P - 5^\circ\text{C}$) - Time maintained above T_L (t_L) - Ramp Up Rate (T_L to T_P) - Ramp Down Rate (T_P to T_L)	260°C 10s max 217°C 30s max 60s - 100s 3°C/s max 6°C/s max
Average Ramp Up Rate (T_{smax} to T_P)	3°C/s max
Time 25°C to Peak Temperature	8 minutes max



DISCLAIMER

Isocom Components is continually working to improve the quality and reliability of its products. Nevertheless, semiconductor devices in general can malfunction or fail due to their inherent electrical sensitivity and vulnerability to physical stress. It is the responsibility of the buyer, when utilizing Isocom Components products, to comply with the standards of safety in making a safe design for the entire system, and to avoid situations in which a malfunction or failure of such Isocom Components products could cause loss of human life, bodily injury or damage to property.

In developing your designs, please ensure that Isocom Components products are used within specified operating ranges as set forth in the most recent Isocom Components products specifications.

The Isocom Components products listed in this document are intended for usage in general electronics applications (computer, personal equipment, office equipment, measuring equipment, industrial robotics, domestic appliances, etc.). These Isocom Components products are neither intended nor warranted for usage in equipment that requires extraordinarily high quality and/or reliability or a malfunction or failure of which may cause loss of human life or bodily injury ("Unintended Usage"). Unintended Usage include atomic energy control instruments, airplane or spaceship instruments, transportation Instruments, traffic signal instruments, combustion control instruments, medical Instruments, all types of safety devices, etc... Unintended Usage of Isocom Components products listed in this document shall be made at the customer's own risk.

Gallium arsenide (GaAs) is a substance used in the products described in this document. GaAs dust and fumes are toxic. Do not break, cut or pulverize the product, or use chemicals to dissolve them. When disposing of the products, follow the appropriate regulations. Do not dispose of the products with other industrial waste or with domestic garbage.

The products described in this document are subject to the foreign exchange and foreign trade laws.

The information contained herein is presented only as a guide for the applications of our products. No responsibility is assumed by Isocom Components for any infringements of intellectual property or other rights of the third parties which may result from its use. No license is granted by implication or otherwise under any intellectual property or other rights of Isocom Components or others.

The information contained herein is subject to change without notice.